

Vendo

SANDEN



Ice
meets
hot



An iced-coffee and affogato concept by SandenVendo



Who's ready for a coffee twist?

Turn a simple cup of hot espresso into an iced coffee or an affogato with the new Iced-Coffee Concept by SandenVendo!



Summer never ends with SandenVendo's Iced-Coffee Concept!

As warmer days stretch longer into the year, iced coffee, tea, and affogato aren't just a trend. They're a must! Keep customers cool with an irresistible drink experience to enjoy anywhere.



Let our **G-Caffè UNI-Q Touch** pour some freshly-brewed espresso or tea into an **ICE³ Cup** of ice or creamy ice-cream delivered by a **G-Frozen Slave** machine to enjoy a moment of pure bliss.

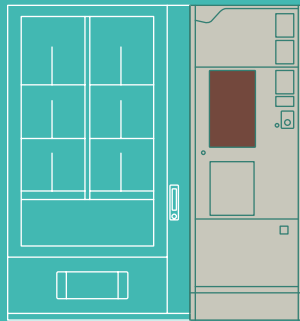
GFrozen

GCaffè



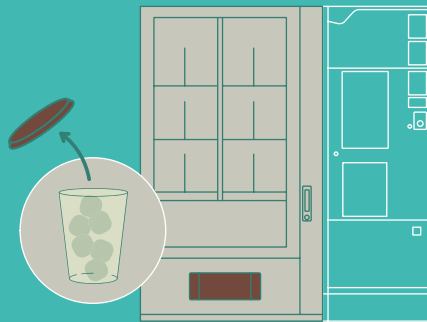
**No wait, no mess:
100% Italian affogato express!**

How does it work?



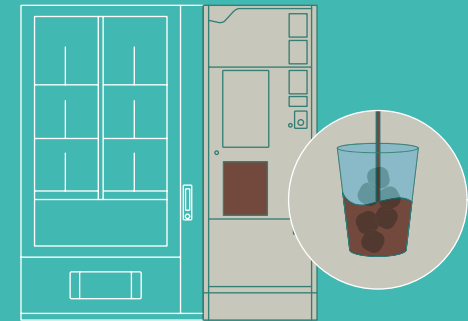
1

Select your iced drink using the 18.5" touch display installed on the G-Caffè.



2

Take the cup from the G-Frozen and remove the lid.



3

Place the **ice³** or Gelato Cup in the G-Caffè and wait for your drink!

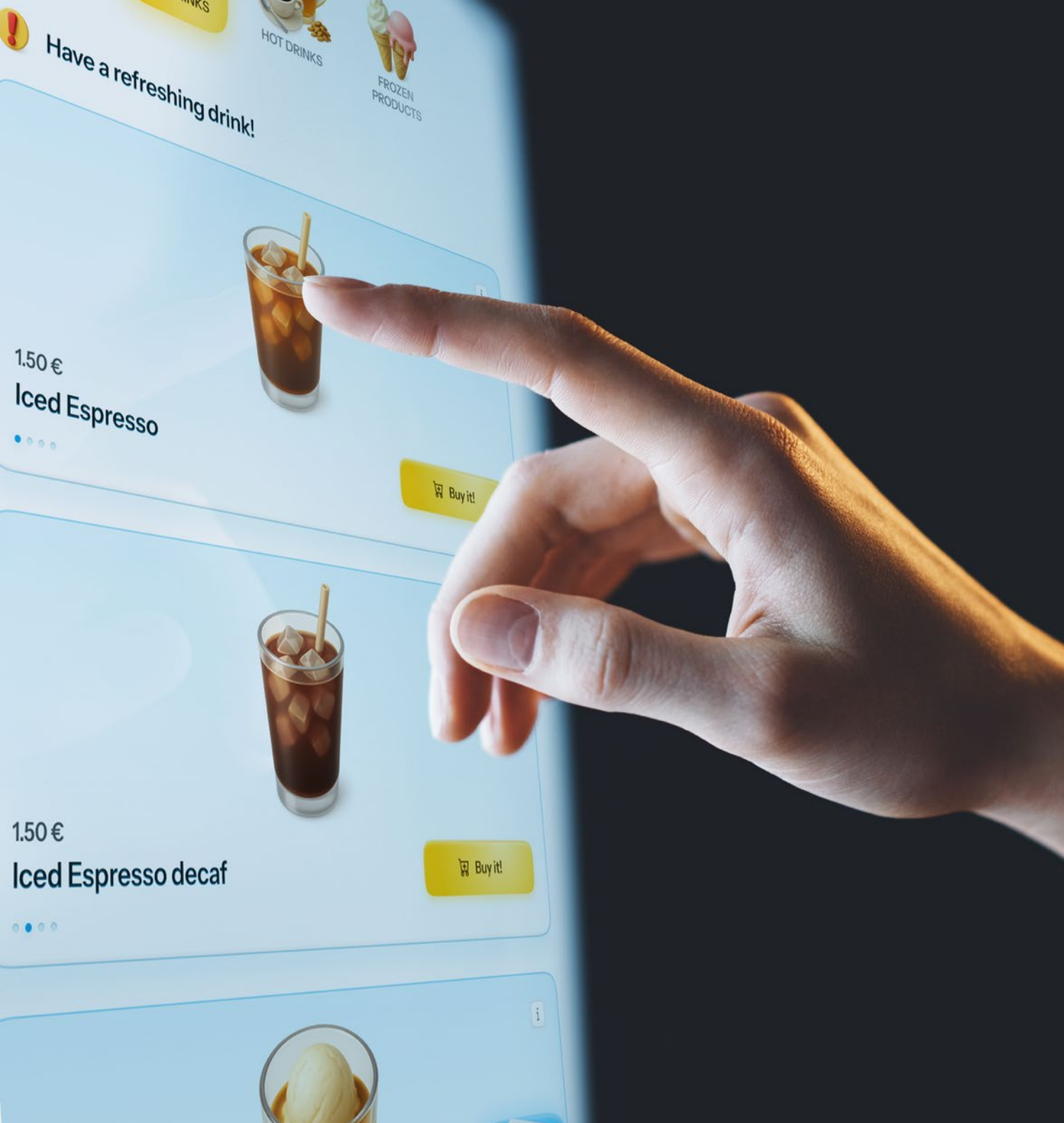
Revolutionizing the vending experience with a touch

The 18.5" touch, digital-ready display can play your brand's promotional videos as a screensaver (1080 x 1920 px). Customize it online via our WebTool for maximum ease.



**PATENTED DESIGN.
UNIQUE INTERFACE INNOVATION.**

Our patented design delivers a distinctive, intuitive interface, introducing a new style of ice-on-the-go (iced coffee and coffee float concept) enhancing user experience and elevating vending innovation.



Meet the Team

GFrozen



G-Frozen Slave

SandenVendo's long-renowned expertise in the development of cooling technologies is finally applied to the frozen food universe with this top-notch sub-zero temperature vending machine.

DIMENSIONS H x W x D	1830* x 880 x 845 mm
WEIGHT	300 Kg
NO. OF SELECTIONS PER SHELF	8
NO. OF SHELVES	Standard 5
NO. OF SELECTIONS	Max. 40
COOLING UNIT	HC - R290
INTERNAL TEMPERATURE RANGE	-10 °C up to -25 °C
MAX. POWER CONSUMPTION	750 W

*With adjustable feet

GCafè



G-Caffè UNI-Q Touch

Designed with an 18.5" touch display, this espresso and hot drinks vending machine can manage multi-purchasing orders while showcasing product offers, nutrition facts, and graphic content of your choice.

DIMENSIONS H x W x D	1830 x 655 x 770 mm
WEIGHT	180 kg
NO. OF SELECTIONS	22
PRE-SELECTION	1 (Sugar)
DISPLAY	18.5" Touch screen
MAX. POWER CONSUMPTION	134 Wh/L

*Energy consumption in Wh per liter of Espresso dispensed



ICE³

ICE³ Cups

Thanks to our exclusive partnership with **ICE³** and an Italian artisanal gelato producer, SandenVendo can provide:

- » Ready-to-use sealed cups filled with crushed ice or ice cubes for iced coffee.
- » Premium single-serving portions of flavored artisanal gelato for affogato.



CUP HEIGHT	120 mm
BASE DIAMETER	65 mm
EDGE DIAMETER	95 mm
CUP CAPACITY	400 ml
LIQUID VOLUME	220 / 250 ml
WEIGHT	130 g of ice

Perfectly portioned, hygienically sealed, and designed to pair seamlessly with our Iced-Coffee Concept vending solution!

Ideal for high-traffic areas such as HoReCa and retail businesses, offices, concerts, and sporting events, our new Iced-Coffee and Affogato Concept boosts vending sales and draws customers' attention with customized brand promotions displayed on the interactive 18.5" touchscreen display.



Opportunities for co-branding, bundled pricing, and synergies with suppliers of sealed single-serving gelato and ice cups such as **ICE³**, make this vending solution a unique, high-margin opportunity.



Your new on-the-go coffee experience begins here.



www.sandenvendo.com